



**2 Bed
House
located in**

52b Surrey Street
Brighton
BN1 3PB



2



1



1

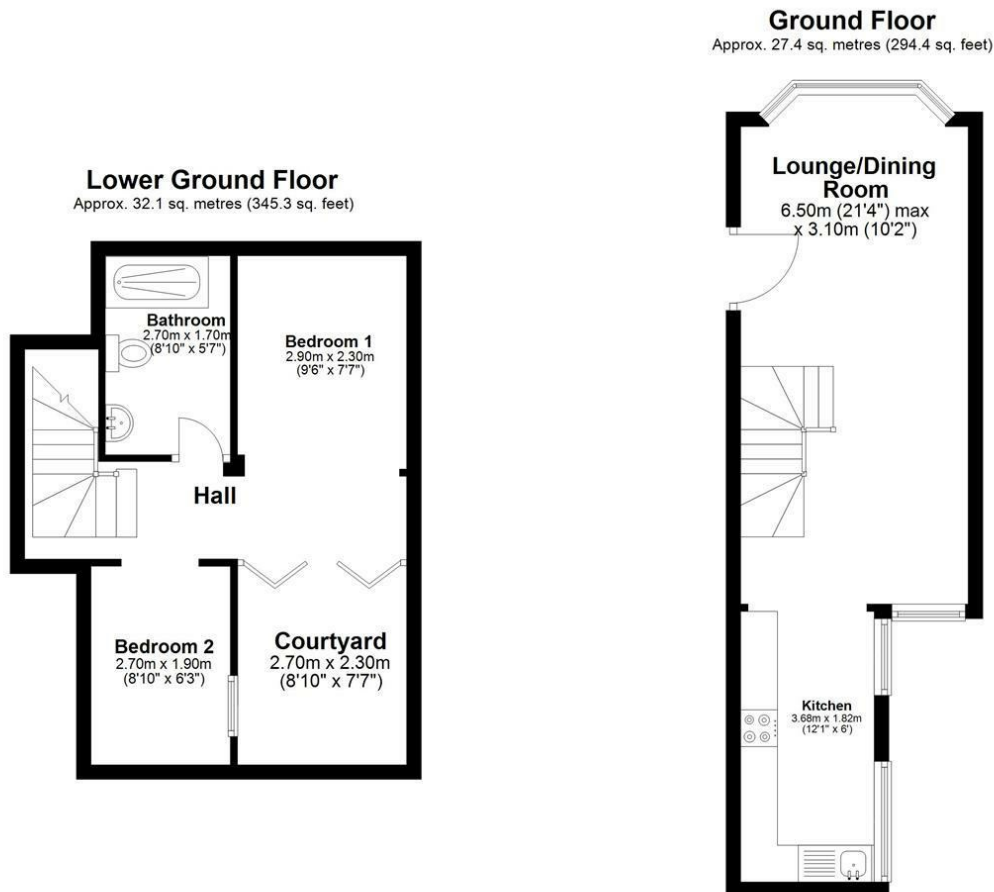


C

£1,675 PCM

Welcome to Surry street a two bed maisonette in the heart of the city with everything Brighton has to offer on your doorstep. This stylish apartment has a spacious living area and outside space.





Total area: approx. 59.4 sq. metres (639.7 sq. feet)

Whilst every attempt has been made to ensure the accuracy of the floor plan contained here, measurements of doors, windows, rooms and any other items are approximate and no responsibility is taken for any error, omission or mis-statement. This plan is for illustrative purposes only and should be used as such by any prospective tenant.
Plan produced using PlanUp.

Surrey Street, Brighton

Energy Efficiency Rating		
	Current	Potential
Very energy efficient - lower running costs		
(92 plus) A		
(81-91) B		
(69-80) C	69	76
(55-68) D		
(39-54) E		
(21-38) F		
(1-20) G		
Not energy efficient - higher running costs		
England & Wales	EU Directive 2002/91/EC	

DIRECTIONS

CONTACT

64 Queens Road
Brighton
East Sussex
BN1 3XD

E: info@myhausbrighton.co.uk

T: 01273 286788

myhausbrighton.co.uk